

**DISCLAIMER**

This brochure design adaptations presented here are intended solely for illustrative purposes to assist in selecting the final Brand Identity. All elements are subject to refinement and modification upon confirmation of the chosen Brand Identity option.



# Anjaneya BLISS

*"The future looks Perfect Here"*

# Anjaneya BLISS

"The future looks Perfect Here"

## Close to Everything

- 100 Mt. Daily Needs
- 200 Mt. Hospital
- 500 Mt. School / College
- 1.0 KM Petrol Pump

## Nearby Location

Distances

1 minutes



2 minutes



5 minutes

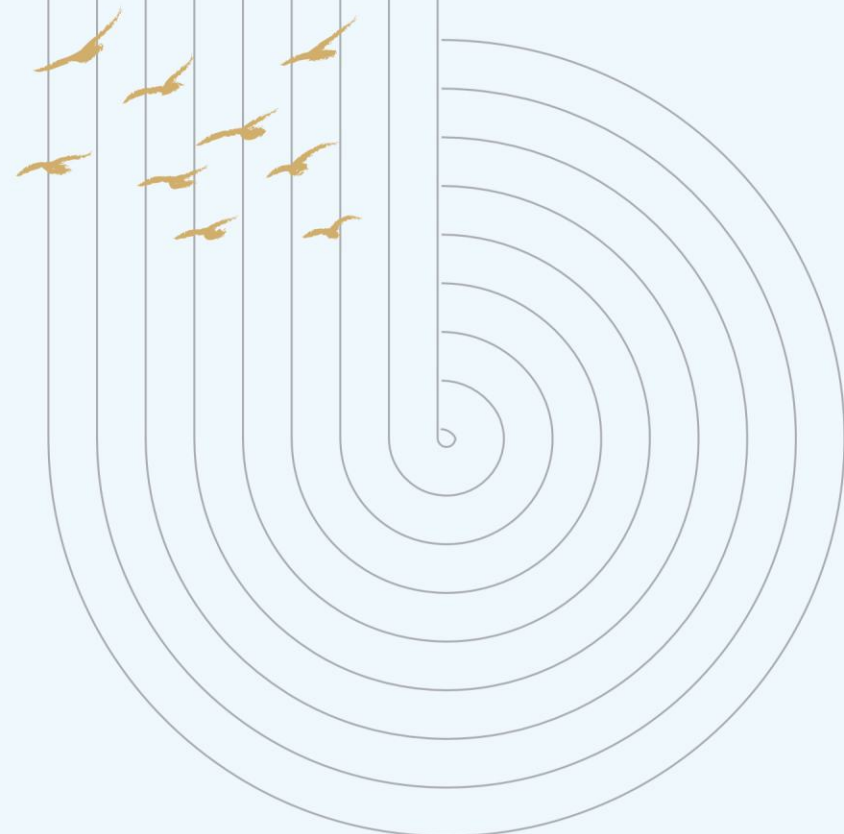




"The future looks *Perfect Here*"

## 4 BHK Ultra Modern Luxurious Flat..

True to its name, Anjaneya Bliss by Yash Infracventures is designed as a peaceful retreat in the heart of the city. Rising as the tallest residential tower in Bajaj Nagar, it stands apart as the only purely residential address within a vibrant commercial hub, offering rare privacy and tranquility. Its distinctive elevation and architectural design celebrate individuality — because every person is unique, and a home should reflect the same. More than a residence, Anjaneya Bliss is a lifestyle shaped by comfort, harmony, and quiet luxury. Guided by decades of collective experience, Yash Infracventures creates spaces defined by intelligent design, lasting quality, and the timeless art of fine living.



# Anjaneya BLISS

“The future looks *Perfect Here*”

Just like its name. Anjaneya Bliss is for those who shine the brightest. Thoughtfully designed for a starry Lifestyle, these homes.

Blend Comfort With  
Elevated Living.

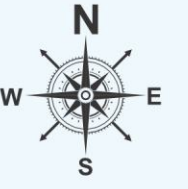


# GROUND FLOOR PLAN



-- SOUTH AMBAZARI ROAD --  
24 M WIDE ROAD

# TYPICAL FLOOR PLAN





3 Bedroom  
FLAT NO. 901 - 1501



4 Bedroom  
FLAT NO. 902 - 1502



Anjaneya  
BLISS

"The future looks *Perfect Here*"

Not Only Brings You Well-designed Homes But  
Also A Living Space That Truly Enriches Your Life.



Drawing Hall & Dining



Drawing Hall



Bedroom

Happiness is more than a moment...

It is a mindset, an expression of self,  
an emotion that stirs life.



Bedroom



Kitchen

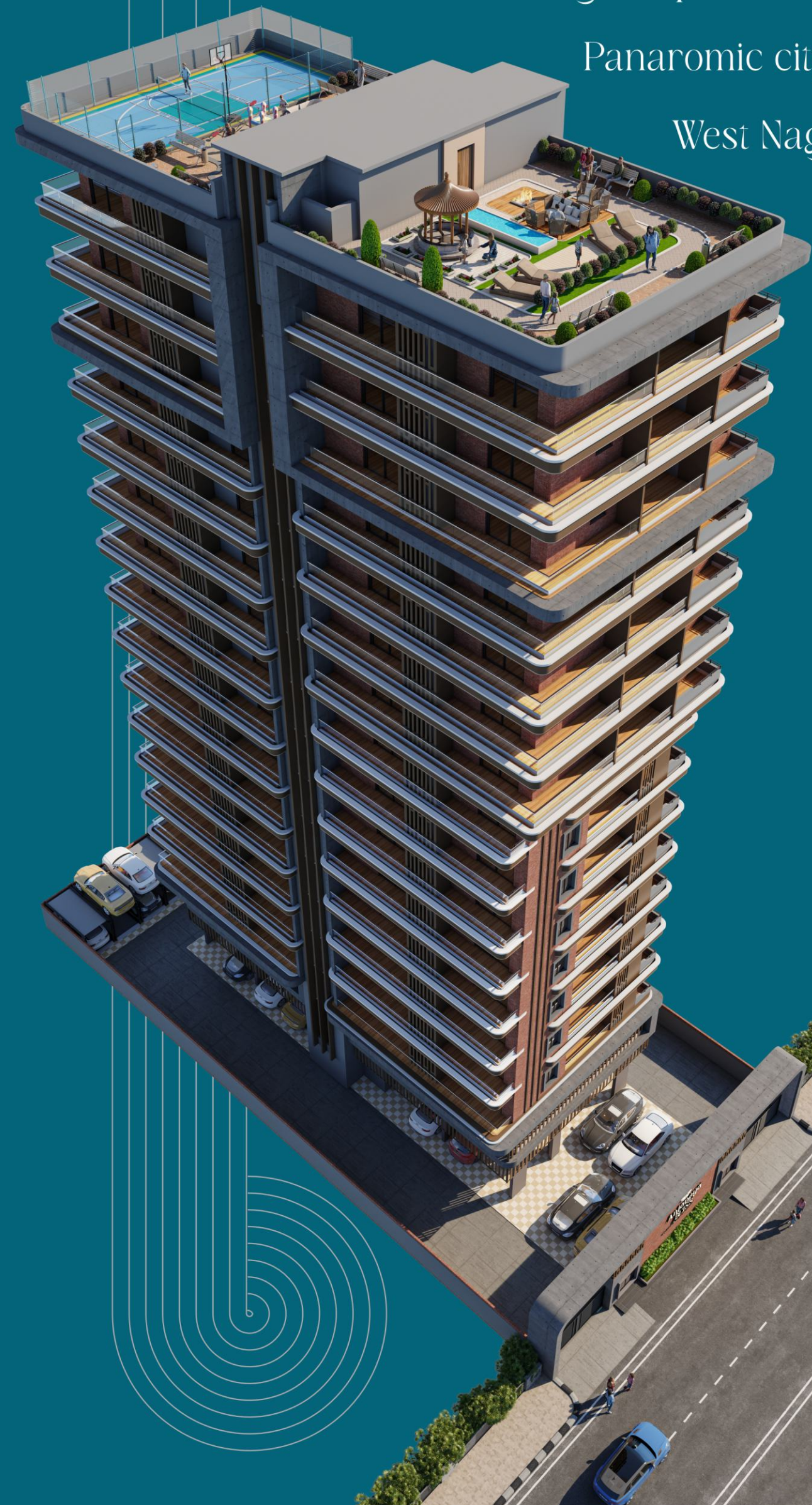


Crafting

a tale that honours

the wings!

Highest pickle ball court with  
Panaromic city views in  
West Nagpur.



### AMENITIES



Terrace Garden



Multipurpose Hall



Pickleball &  
Basketball Court



Senior Citizen Area



Game Zone for kids  
Indoor and Outdoor



Swimming Pool



EV Charging Point



Security Guard Room  
in Parking



Power Backup With  
DG Set Common Area



Gypsum POP in All Rooms



Video Door Phone



Solar For Common Area



Walking & Jogging Track



GYM & Yoga Indoor



Gazebo Lounge



Waiting lounge in  
Ground Floor



High Speed  
Automatic Lifts



CCTV / Security in  
common area

Happiness Is Having Fun.



Swimming Pool



Multipurpose Hall



Gymnasium



  
**Anjaneya**  
**BLISS**

"The future looks *Perfect Here*"

Where Every Home Tells a Story.

Life feels better when every day of your home reflects timeless tales of your taste. a lifestyle upgrade with space to grow, style to inspire, and comfort to cherish daily.



# Anjaneya BLISS

“The future looks *Perfect Here*”

More than just a home, Anjaneya Bliss is a place where life feels uplifting and fulfilling. It is a space designed to reflect your aspirations, support your dreams, and enhance your everyday experiences. A place where mornings begin with promise, evenings unwind with calm, and every day holds a hint of something extraordinary.

Where Comfort Meets

Elevated Living.



Tallest Residential Building  
in Bajaj Nagar.





“Built for comfort.  
Designed for life.”

## Specification



**STRUCTURE**  
• Earth-quake resistant,  
RCC framed structure



**PLUMBING**  
• ISI Mark Full CPVC, SWR Pipe Fittings  
• SWR Pipe for Soil pipe & Rain Water pipe  
• Rain Water Harvesting



**WALLS**  
• Internal: 4" (115 mm) thick brick  
• External: 6" (150 mm) thick brick  
• AAC block for better thermal / Insulation



**DOORS**  
Main Door – Wooden Door with Engineered Veneer  
Other Door – Wooden Door with Engineered Veneer  
Toilet – Wooden Door with Engineered Veneer



**BED ROOM & LIVING ROOM**  
• Designer Floor Tiles  
• AC Point Hall & All Bedrooms  
• POP All Rooms with panel lights



**Windows**  
• Aluminium Window  
• S.S. Glass Railing in Balcony & Terrace  
• S.S. Railing in Staircase



**KITCHEN**  
• Granite top with S.S. Sink, Aqua guard point  
• Semi Modular Kitchen



**ELECTRICAL**  
• Concealed electrical fitting with ISI make wire and modular switches  
• Sufficient power outlet and light points provided  
• DG Power Back Up for common area & Emergency light point in every flat  
• EV charging compatibility is provided in the building.



**BATHROOM**  
• Matt Finish floor (2'X4') / Anti skid  
• Premium make fittings & premium sanitary ware  
• Designer dado up to 8ft Height  
• Hot & Cold water connection  
• PVC Ceiling in Bathroom



**PAINTING**  
• Internal - Emulsion Paint with Full Putty  
• External - Weather proof Paint



**LIFT & PARKING**  
• LIFT With ARD, Generator Backup  
• Allotted Car Parking  
• Elegant Entry lobby with waiting lounge siting

Note:- Stamp Duty & Registration fees | Electrical Meter charges, Air Conditioning, Transformer deposit, Water Meter & Connection Charges. Deposits & Expenses at actual to be paid extra in advance. G.S.T. or any such additional taxes will be charged extra. Changes in the specification & plan will cost extra. Possession of the Flat will be given by the builder after clearance of all dues. Any Extra Work shall be charged separately before execution.



ISO 9001:2015

## YASH INFRAVENTURES

ELEVATE YOUR LIFE STYLE

Office: 1st Floor, Rohera Business Arcade,  
Ajni Square, Wardha Road, Nagpur - 440015  
e-mail : [info.yashinfraventures@gmail.com](mailto:info.yashinfraventures@gmail.com)  
Web: [www.yashinfraventures.com](http://www.yashinfraventures.com)

### More Details :

8989-96-8989 | 9823-28-5086



**Architect**  
**PRATIBHA DESIGNERS**  
Ar. Hemant Mandwekar  
+91-9764003090

**Structural Engineer**  
**KAMATH & Co.**  
Er. G. M. Kamath  
+91-7122223821

**Legal Advisor**  
Adv. Shashikant Toal

**MAHARERA**  
Registration No.

**P505000**

[maharera.mahaonline.gov.in](http://maharera.mahaonline.gov.in)



NOTES: This Project Brochure is for restricted private circulation only and shall neither be considered as a legal document or binding agreement with obligation for specific performance nor as an offer for sale in any case. The Project Vendor and Land Owners, at their sole discretion, have reserved all rights to change or revise or make any modification, alteration omission, addition in the Project as a whole or any part thereof or any details therein without any notice to anybody as and when required of necessary for any reason and the same will be binding to all the concerned whether it may or may not affect their respective interests or rights whatsoever in the Project. All outer & interior architectural 3D images, appearance of the buildings including its elements, roads, floor paving, plants, surroundings, colors etc. shown in this Brochure are not factual or real view but merely conceptual presentation using computer graphics meant for tentative and easy understanding of the Project, its features and elements in general. All dimensions, measurements and sizes shown in this Brochure are approximate and are from the unfinished surface which may differ or vary when finished finally.

9975750596  
**CEVICINI**